



High Force Hydraulics Pvt. Ltd.

6738, Block No. 10, Street No. 2, Dev Nagar, Karol Bagh, New Delhi-110005
Tel. 011-45038532 • Mob.: **98111-82148, 85888-27850** • Fax: 011-45038532 • E-mail : info@highforcehydraulics.com
Website : www.highforcehydraulics.com

PRODUCT & SERVICE SUPPORT

Serving your Immediate Hydraulic Needs



Accumulators



Bladder Accumulators

Capacity: 0.2 Litres to 575 Litres



Diaphragm Accumulators

Capacity 0.075 Litres to 3.5 Litres



Piston Accumulators

Capacity upto 1350 Litres



Stainless Steel Pulsation Dampers

Capacity upto 5 Litres

Replacement of Bladder, Servicing & Charging of Accumulators any make or models high pressure and low pressure. Bladders available in all material such as Nitrile, Viton, Butyl etc. Shell available in CS, SS OR any other material required. Direct replacement with any make or model by using an adaptor (Diaphragm Accumulators)

Hydraulic Cylinders



Features / Benefits :

- Single acting, Double acting.
- Bore Size : upto 300 mm, Stroke : upto 2500 mm. based on size.
- Working pressure 25 - 350 Bar.
- Special Application/Design



We undertake
reconditioning of
Hydraulic Equipment
of any make.

**BHAGWATI**

AN ISO 9001-2008 Company

*Quality...**... not just a word, we mean it.*

Filter Elements

**Different Elements Media**

Paper : 10, 15, 25 Microns (Nominal)
 Glass Fibre : 1,3,6,10,20 Microns (Absolute)
 S.S. Wire Mesh : 5 to 1500 Microns (Nominal)

**Suction Strainers**

Size : 1/2" to 3" (Larger Size on Request)

**S.S. Welded Elements**

Filtration : 3 Microns-60 Microns (Absolute)
 : 3 Microns-60 Microns (Nominal)

- Standard elements with differential pressure of 30 bar. Special elements made for applications with differential pressure of 60 Bar, 160 bar and 330 bar.
- Standard elements offered with M.O.C.- M.S. Zinc / Nickle Plated, SS 304, SS 316, SS 316L, Welded Construction Elements.

- Elements as per Sample / Sketch Developed And Supplied In Desposable Media (Paper and Glass Fiber) And Cleanable Media (SS Wiremesh).
- Pressure line Filters/In line Filters/Return line Filters Direct Replacement with all reputed make filters. Please send rough sketch / drawing / used sample

**BHAGWATI**

AN ISO 9001-2008 Company

*Quality...**... not just a word, we mean it.*

Hydraulic, Lubrication & Industrial Filters



Sr. No.	Type	Rating	Max. Flow	Filtration Grade
1	Low & Medium Pressure Inline Filters	25 Bar 100 Bar	1800 LPM 1800 LPM	From 1 Micron Absolute To 500 Microns Nominal And Above
2	High Pressure Inline Filters	250 Bar 400 Bar	460 LPM 460 LPM	From 1 Micron Absolute To 500 Microns Nominal And Above
3	Duplex Inline Filters	25 Bar 100 Bar	1800 LPM 1800 LPM	From 1 Micron Absolute To 500 Microns Nominal And Above
4	Return Line Filters	16 Bar	460 LPM	From 1 Micron Absolute To 500 Microns Nominal And Above



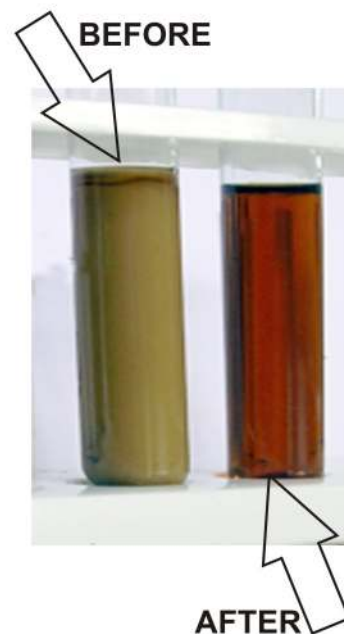
Industrial Oil Purification Units

Our Machines are Useful for Filtration of

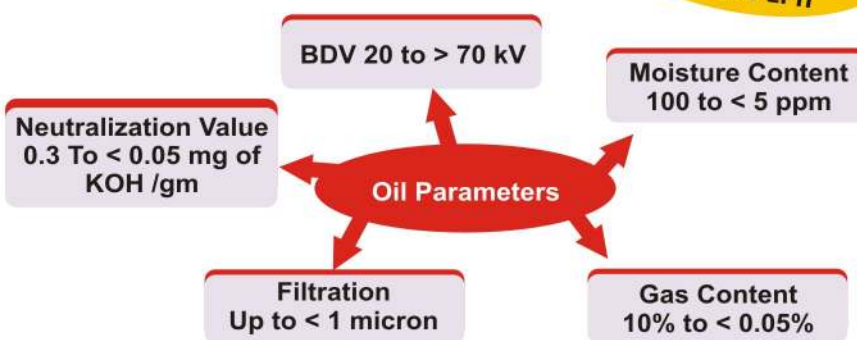
- **HYDRAULIC OILS**
- **THERMIC FLUIDS**
- **TURBINE OILS**
- **LUBE OILS**
- **EDIBLE OILS**

TECHNICAL DATA SHEET FOR INDUSTRIAL OIL PURIFICATION SYSTEMS						
Flow Rate	LPH	240	500	750	1500	
Model		SFCV-024	SFCV-050	SFCV-075	SFCV-150	
Motor Power	Inlet	HP	0.5	1	1	1.5
	Outlet	HP	0.5	0.5	0.5	1
	Vaccum-1	HP	1	1	2	3
Heater Power	Heater-1	Total KW	6	12	18	18
		NOSxKW	3x2	6x2	6x3	6x3
	Heater-2	Total KW	-	-	-	9
		NOSxKW	-	-	-	3x3
Total (kw)			6	12	18	27
Filtration System	Spirafuge		FOR COARSE DIRT REMOVAL			
	Coalescer		FOR FREE WATER REMOVAL			
	Centrifuge		FOR FINE PARTICLE SEPARATION			
Vaccum Pump Displacement	Vaccum-1	m3/HR	20	25-30	45	65
Working Vaccum		mbar	LESS THAN 10 mbar.*			
Water Handling Capacity		kg/hr	0.25	0.3-0.5	0.9	1.6

* indicates the vaccum during final pass of oil.



Transformer Oil Filtration & Dehydration Plants



Flow Rate
300 LPH to
12000 LPH

Our single stage plants (Models 1V) are capable of attaining following oil parameter in 3-5 passes and Two Stage Plants (Models 2V) in 1-3 passes depending on the oil condition:

SR. NO.	PARAMETERS	UNITS	BEFORE FILTRATION	AFTER FILTRATION
1	Break Down Voltage with 2.5mm Electrode Gap.	kV	25	>50- 70
2	Moisture Removal	ppm	50-100	Up to < 5 - 10
3	Neutralization Value (With IRC Option Only)	mg of KOH/g	0.5	< 0.1
4	Particle size (Filter Fineness)	Micron	Visible	< 1
5	Gas Content	% Vol./Vol.	<10%	< 0.1%



Specialities

Low operating cost due to high vacuum filtration with rotary oil sealed pumps.

Plants with minimum and easy maintenance

Designed and manufactured to suit customer's specific requirement

PP AND NYLON FILTER BAGS

In the bag filtration system, the filter bag is supported by an inside metal basket. The incoming fluid is to flow out after being filtered by the bag, thus the impurity is intercepted in the filter bag. You can continue to use the filter system after changing the filter bag. It is a trend for the bag filter to replace partly the cartridge filter. The small filter bag can filter large amount of liquid.

The filter bag is key to filtering.

Filter Bag Size	Trade Size	Max Flow (gpm)	Micron	Craft
4"x8"	3	25	1, 5, 10, 25, 50, 100, 200	Sewn/Welded
4"x17"	4	50	1, 5, 10, 25, 50, 100, 200	Sewn/Welded
7"x17"	1	100	1, 5, 10, 25, 50, 100, 200	Sewn/Welded
7"x32"	2	220	1, 5, 10, 25, 50, 100, 200	Sewn/Welded

Micron Ratings-Absolute- rated filter bags will retain at least 90% of particles of the specified micron size. All other bags will retain particles, but not to any percent efficiency. Often referred to as nominal rated. To achieve the desired filtration, select a bag with a micron size smaller than the particles you want to filter.



STRING WOUND FILTER CARTRIDGES

Typical application

- Water purification system.
- Filtration of different beverages and wines
- Filtration in medical industry
- Filtration in electronic industry
- Cleaning filtration in sewage processing Etc.

Main Technical Specifications (10 Inches Filter-cartridge)

Item	Technical Data
Pore size (Micron)	1.0-100
Length	10-40"
Normal Working Temperature	For PP-55°C For Cotton-125°C
Maximum Working Temp.	80°C (P=0.10 Mpa)
Maximum Differential Pressure	0.42 Mpa
PH Value	1-13



MELT-BLOWN PP FILTER CARTRIDGE

Typical application

Filtration of water purification system.
Filtration of different beverages and wines
Filtration in medical industry
Filtration in electronic industry
Cleaning filtration in sewage processing

Item	Technical Data
Material	PP micron fiber
Effective Length	10"-60"
Pore Size (Micron)	1-100
Maximum Differential Pressure	0.42 MPa



SS FILTER HOUSING

- High flowing rates
- Low pressure drop and positive sealing design
- Easy maintenance and installation
- Draining on clean and dirty sides
- Quick release closures
- Polished structure

We undertake
reconditioning of
Hydraulic Equipment
of any make.

High Pressure Hydraulic Jacks



HYDRAULIC JACKS	CAPACITY	STROKE
Hydraulic Toe Jack / Machine Lift	5 Tons to 20 Tons	150 mm
Hydraulic Pancake Jack	10 Tons to 200 Tons	10 mm
Hydraulic Flat Jack	5 Tons to 200 Tons	16 mm to 25 mm
Hydraulic Low Height Jack	10 Tons to 200 Tons	25 mm to 100 mm
Hydraulic Plain Ram & Threaded Ram Spring Return General Purpose Jack	10 Tons to 200 Tons	100 mm to 150 mm
Plain Ram & Threaded Ram Load Return Jack Single Acting & Double Acting	10 Tons to 1000 Tons	100 mm to 500 mm
Hydraulic Centre Hole Jack (Single Acting & Double Acting)	10 Tons to 200 Tons	50 mm to 150 mm
Hydraulic Telescopic Jack	20 Tons to 50 Tons	140 mm

LONG STROKE CAN BE MANUFACTURE AS PER YOUR SPECIFICATIONS/REQUIREMENT.

Pullers



Hydraulic Pullers
(4 Tons to 100 Tons)

- ← Hydraulic Pullers (With Inbuilt Pump)
- ← Hydraulic Pullers (With External Pump)
- Attachments:
- ← Grip Puller Attachment
- ← Bearing Puller cum Push Puller Attachment
- ← Internal Puller.



- ← Manual Pullers (2 Jaw, 3 Jaw)
- ← Internal Puller
- ← Transmission Bearing Puller
(1 Ton to 40 Tons)
(Spread 6.4 to 635 mm)
(Reach 57 to 356 mm)

High Pressure Hydraulic Tools

	Hydraulic Pancake jack Cap. : 10 Ton to 200 Tons Stroke : 20-30mm Hydraulic Toe / Machine Lift Jack Cap. : 5 Ton to 20 Tons Stroke : 150 mm		Hydraulic Flat Jack Cap. : 5 Ton to 200 Tons Stroke : 8 -16 mm Hydraulic Low Height Jack Cap. : 10 Ton to 200 Tons Stroke : 25 to 60 mm
	Hydraulic Jack (Plain Ram & Threaded Ram) Spring Return Cap. : 5 Ton to 500 Tons Stroke : 100 to 150mm		Hydraulic Jack (Plain Ram & Threaded Ram) Load Return Cap. : 600 Ton to 1000 Tons Stroke : 100 to 150 mm
	Hydraulic Aluminium Jack Light Weight Cap. : 10 Ton-200 Tons Stroke : 10-500 mm		Hydraulic Telescopic Jack Cap. : 20 Ton to 50 Tons
	Hydraulic Double Acting Jack Cap. : 5 Ton to 1000 Tons Stroke : 150mm		Hydraulic Centre Hole Jack Single Acting & Double Acting Cap. : 10 Ton to 100 Ton Stroke : 50-150 mm
	Hydraulic Cylinders (Single Acting, Double Acting) Bore Size upto 300 mm, Stroke : Upto 2500 mm		Hydraulic Bottle Type Jacks Cap.: 5 Ton to 100 Tons Hydraulic Crocodile Type Jack Cap.: 1 1/2 Ton to 20 Tons for Car, Truck & Buses
	Hydraulic Hand Pump Single Speed & Double Speed (150 Bar to 2800 Bar)		Hydraulic Power pack (25 Bar to 700 Bar)
	Mechanical Jacks (Track Jack, Cable Drum Jack, General Purpose Jack) (5 Tons to 50 Tons)		Hydraulic Torque Wrench (Torque 400 KgM to 5000 KgM)
	Hydraulic Stud Tensioner (M 16 - M 160)		Hydraulic Nut Splitter (5 Tons to 50 tons)
	Hydraulic Flange Spreader (5 Tons to 15 Tons)		Hydraulic Crimping Tools
	Hydraulic Wire Cutter (Cutting Force: 10 T)		Hydraulic Presses (10 Tons to 500 Tons)

The above are our standard models, Long Stroke and Higher Capacity can be provided as per requirement

Industrial Accessories

OIL LEVEL INDICATOR (LBT TYPE)

Material :

M.S. / Brass / S.S.

Size :

1/4" to 1" BSP

Pipe Length :

1 to 24"

Max. Temp. : 150°C

Max. Pressure : 50 PSI



OIL LEVEL INDICATOR (BOTH END FITTING TYPE)

Material :

M.S. / Brass / S.S.

Size :

1/4" to 1" BSP

Pipe Length :

Upto 6"

Max. Temp. : 150°C

Max. Pressure : 50 PSI



OIL LEVEL INDICATOR (FACE TYPE)

Size :

3", 5" & 10"

Threading :

M 10 & M 12

Material :

Acrylic/M.S./Polycarbonate

Treatment: Chrome Plated Cover



OIL LEVEL INDICATOR (KNOB TYPE)

Material :

Aluminium/SS/Brass

Size :

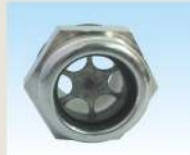
1/4" to 2" BSP/NPT/
Metric

Max. Temp. :

150°C

Max. Pressure :

50 PSI



OIL FLOW INDICATOR

Material :

Aluminium/Brass

Size :
Screwed BSP / NPT

Max. Temp. :

150°C

Glass :

Borosilicate



OIL SUMP BOTTLES

Sizes :

As per Customer's
requirement



TOUGHENED ROUND/RECTANGULAR GLASSES

Sizes :

As per Customer's
requirement



Available for High Temperature also

DRAIN PLUG FLANGED (MAGNETIC)

Material :

M.S. / SS / Brass

Size :

1/4" to 2" BSP/NPT

Washer : Nitrile

Washer fitting :
Special

Magnet : 10 mm Standard



OIL FILLER BREATHER

Material : M.S.

Size :

1/4" to 1" BSP/NPT

Air Flow :

5 to 25 CFM

Filtration :

40 Micron

Also available for side mounting



BREATHER WITH DOUBLE FILTER

Size :

1/8" to 2" BSP

Material :

Aluminium/Brass/SS/AL

Washer nitrile.

Suitable for smaller gear boxes



CONSTANT OIL LEVELLER (SPRING LOADED)

SIZES	CAPACITY
1/4" BSP	100 ML
1/4" BSP	150 ML

MOC : ACRYLIC FOR CUP & ALUMINIUM FOR CONNECTION



GREASE INJECTOR (ADJUSTABLE TYPE)

SIZES	CAPACITY
1/4" BSP	35 CC
1/4" BSP	70 CC
1/4" BSP	200 CC

MOC : ACRYLIC FOR CUP & ALUMINIUM FOR CONNECTION



Pumps & Valves



Piston Pump, Vane Pump, Gear Pump, Pressure Control Valve, Flow Control Valve, Directional Control Valve, Solenoid Valve, Relief Valve, Modular Control Valve, Check Valve

Hydraulic Fittings

* Strength * Durability * Reliability

MOC: MS/SS



Forged Elbow
Socket Weld /
Threaded BSP/NPT

1/2" to 4"

Pressure 3000 Lbs,
6000 Lbs, 9000 Lbs

Forged Tee

1/2" to 4"

Pressure 3000 Lbs,
6000 Lbs

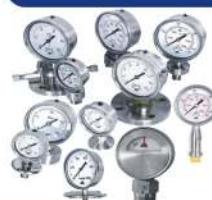
Reducer

1/4" to 4"

Pressure 3000 Lbs,
6000 Lbs

Hose Adaptors, Hex Nipples, Union, Plugs,
Bushing, Hydraulic Adaptors & Fittings.

Pressure Gauges



AIR OPERATED GREASE PUMPS



HOSES



Valves

2 WAY HIGH PRESSURE BALL VALVE

Material : Carbon Steel/Stainless Steel

Size : 1/4" to 4"

Pressure Range :

Upto 1000 Bar

End Connection-Screwed-BSP(ISO-228T1)
NPT Male/Female Extended Nipple.



2 WAY LOW PRESSURE BALL VALVE

Material : Cast Steel/Stainless Steel

Size : 1/4" to 4"

Pressure Range :

Upto 70 Bar

End Connection-Screwed-BSP(ISO-228T1)
NPT Male/Female Extended Nipple.



Tel. 011-45038532 • Mob.: 98111-82148, 85888-27850 • Fax: 011-45038532 • E-mail : info@highforcehydraulics.com

Website : www.highforcehydraulics.com

Cylinders can be Manufacture
as per customer's
requirement also.

Hydraulic / Manual Clamping Elements

We can provide direct replacement for Kosmek's and other reputed make cylinders, work support.



Hollow Cylinder



Threaded Body Cylinder



Mini Threaded Body Cylinder



Hydraulic Work Support



Die Clamping Cylinder



Manifold Mounting Cylinder



Swing Cylinder



Vertical Swing Cylinder



Top Flange Mounting Swing Cylinder



Bottom Flange Mounting Swing Cylinder



Pneumatic Swing Cylinder



Threaded Body Swing Cylinder



Pull Type Cylinder



Compact Type Cylinder



Low Block Cylinder



Block Type Cylinder



Hydraulic Cylinder



Rotary Distributor



Hydropneumatic Intensifier



Oil to Oil Booster



Pallet Change Hydraulic Coupling Unit



Pressure Reducing Valve



Sequence Valve



T-Bolt Forged Head



Spring Plunger



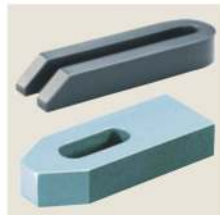
Self Aligning Pad



Adjustable Height Plates



Universal Strap Clamp



Open-Ended / Strap Clamp



Heel Strap Clamp



Extension Nut



Studs



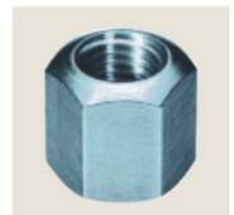
T BOLT



T Nut



Plain Washer



Hex Nut



Spherical Washer with Conical Seat



Leveling Pads-Male



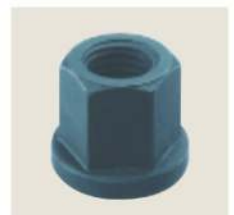
Leveling Pads-Female



Set screw



Set screw



Flange Nut

Material Handling Equipments



Hydraulic Lifting Table
Cap – 250 Kgs to 3000 Kgs
Lifting Height Upto 5000 mm



Hydraulic Lifting Table
(Pit Mounted)
Cap – 250 Kgs to 3000 Kgs
Lifting Height Upto 5000 mm



Hydraulic Lifting Table
(Pit Mounted)
Cap – 250 Kgs to 3000 Kgs
Lifting Height Upto 5000 mm



Hydraulic Lifting Table
(Roller Frame)
Cap – 250 Kgs to 3000 Kgs
Lifting Height Upto 5000 mm



Hydraulic Scissor Lift
Cap – 250 Kgs to 1000 Kgs
Lifting Height Upto 13000 mm



Hydraulic Scissor Lift
Cap – 250 Kgs to 1000 Kgs
Lifting Height Upto 13000 mm



Aerial Order Picker
Cap – 100-200 Kgs.
Lifting Height Upto 4500 mm



Battery Drive Scissor
Maintenance Platform
Cap- 250 to 400 Kgs.
Lifting Height Upto 9500 mm



Manual Hydraulic Stacker
Cap – 650 Kgs to 2000 Kgs.
Lifting Height Up to 4000 mm



Adjustable Fork Stacker
Cap – 650 Kgs to 2000 Kgs.
Lifting Height Up to 4000 mm



Manual Hydraulic Stacker
(Platform Type)
Cap – 650 Kgs to 2000 Kgs.
Lifting Height Up to 4000 mm



Manual Hydraulic Stacker
Cap – 650 Kgs to 2000 Kgs.
Lifting Height Up to 4000 mm



Wall Mounted Stacker
(Single Mast)
Cap – 250 Kgs to 2000 Kgs.
Lifting Height Upto 10 Mtr.,



Wall Mounted Stacker
(Double Mast)
Cap – 250 Kgs to 2000 Kgs.
Lifting Height Upto 13 Mtr.,



Hydraulic Goods Lift
Cap – 250 Kgs to 2000 Kgs.
Lifting Height Upto 13 Mtr.,



Hydraulic Goods Lift
Cap – 250 Kgs to 2000 Kgs.
Lifting Height Upto 13 Mtr.,



Drum Lifter
(Lifter – Tilter-Carrier)



Drum Carrier
for 210 Ltr., M.S. Drum



Hydraulic Drum Carrier
for 210 Ltr., M.S. Drum



Hydraulic Drum Stacker

Material Handling Equipments



Hydraulic Floor Crane
Cap 1000 Kgs to 3000 Kgs



Chain Pulley Block
Cap – 500 Kgs to 10000 Kgs



Polyester Webbing Slings



Wire Rope Slings
Size: 0.5 mm to 100 mm dia



Hydraulic Hand Pallet Truck
Cap – 1000 Kgs to 5000 Kgs



High Lift Pallet Truck
Cap – 500 to 1500 Kgs



Hydraulic Hand Pallet Truck
(Roll)
Cap – 1000 Kgs to 2000 Kgs



Rough Terrain Pallet Truck
Cap – 1000 Kgs



Four wheel Pull Trolley
Cap- Upto 2000 Kgs.



Rickshaw Trolley



Manual Trolley



Baggage Trolley
Cap-Upto 2000 Kgs.



Gas Cylinder Trolley



Chip Trolley
Cap- Upto 500 Kgs.



Pallet Formed
Wire Mesh Trolley
Cap- Upto 1500 Kgs.



Heavy Duty Box Trolley
Cap- Upto 500 Kgs.



Heavy Duty Rack



Compactor



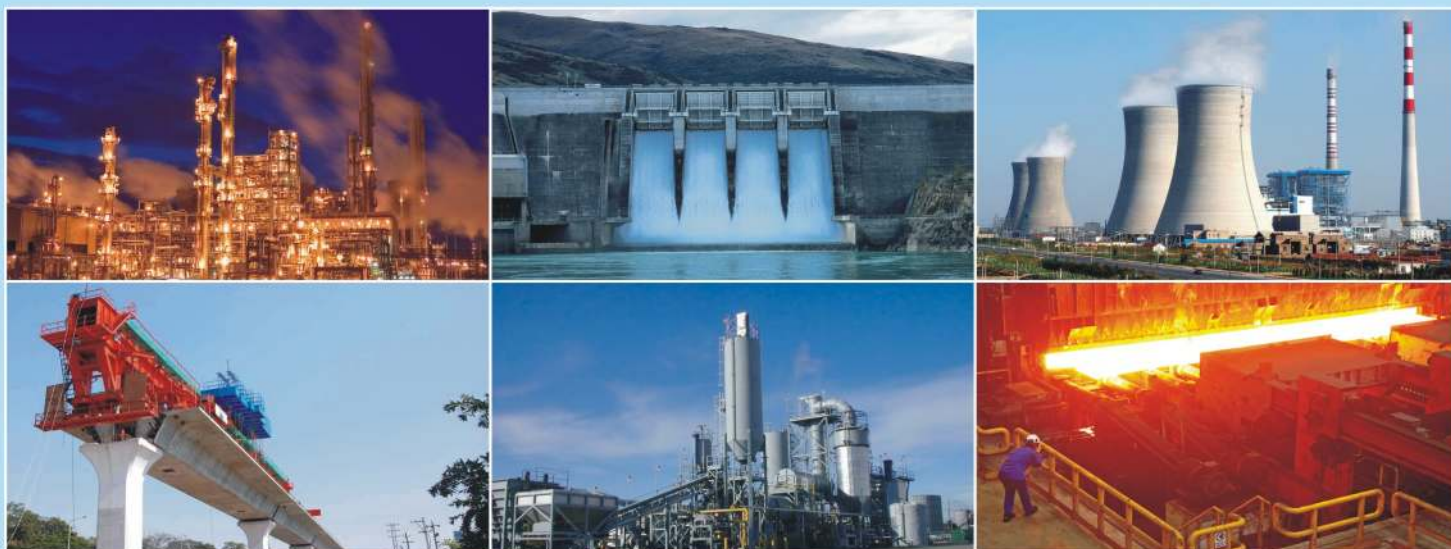
Roller Track



Wheels
Polyurethane, Rubber,
UHMW

SOME OF OUR ESTEEMED CLIENTS



- The user/buyer should satisfy himself for the adequacy of the product chosen for his application. The products are continuously upgraded hence, specifications are subject to change without prior intimation. All orders are subject to final acceptance by HFH.
- These are our standard models; however the equipment can be manufacture as per your specifications also.
- HFH is not responsible for any lose in any manner.
- Picture may differ from actual products.
- Dimensions, models can be changed without any prior intimation.
- All names, Images and logos are copyright of their respective owners.



High Force Hydraulics Pvt. Ltd.

6738, Block No. 10, Street No. 2, Dev Nagar, Karol Bagh, New Delhi-110005
 Tel. 011-45038532 • Mob.: 98111-82148, 85888-27850 • Fax: 011-45038532 • E-mail: info@highforcehydraulics.com
 Website : www.highforcehydraulics.com